

PR154 'Colours Collection' Bib Apron with Pocket

Description:

A classic Bib Apron that features a centre pocket with built in pen pocket. Available in 42 colours from the Premier 'Colours Collection', this apron has a sliding adjustable buckle on the neckband so the wearer can adjust the overall length.

Product Features:

- Sliding adjustable buckle on neck band
- Self fabric neckband
- Self fabric ties
- Tablet friendly centre pocket with combined pen slot

Available In:

One Size

Certifications:



Colours:

Colour	Pantone	C	M	Y	K	Colour	Pantone	C	M	Y	K	Colour	Pantone	C	M	Y	K
Apple	361c	77	0	100	0	Lime	2304c	37	9	83	11	Salsa	7419c	9	76	40	26
Aqua	344c	32	0	30	0	Mid Blue	2139c	79	49	17	15	Sapphire	2144c	95	53	0	0
Aubergine	7449c	65	98	21	83	Mocha	7615c	50	61	57	13	Silver	429c	21	11	9	23
Black	Black c	0	0	0	100	Moss Green	2410c	63	26	73	51	Strawberry Red	199c	0	100	72	0
Bottle	7484c	91	14	78	60	Natural	4755c	3	16	20	9	Steel	431c	45	25	16	59
Brown	4975c	36	84	59	85	Navy	533c	95	72	15	67	Sunflower	7411c	0	42	75	2
Burgundy	209c	20	97	40	58	Oasis Green	5753c	42	16	80	58	Teal	3155c	100	9	29	47
Chestnut	7581c	0	64	70	60	Olive	7763c	46	26	84	66	Terracotta	7584c	0	70	100	17
Dark Grey	425c	52	29	30	78	Orange	172c	0	73	87	0	Turquoise	7703c	79	2	10	11
Emerald	7728c	93	0	75	55	Pink	707c	0	36	8	0	White	White	0	0	0	0
Fuchsia	2046c	0	80	7	3	Purple	7447c	77	85	6	18						
Hot Pink	215c	66	100	26	24	Red	201c	7	100	68	32						
Khaki	7536c	11	13	30	32	Rich Violet	7677c	68	78	0	0						
Lemon	1215c	0	6	53	0	Rose	5015c	13	36	17	1						
Light Blue	2707c	20	6	0	0	Royal	7687c	100	78	0	18						
Lilac	2085c	9	16	0	0	Sage	5497c	38	9	23	32						

Fabric:

65% Polyester, 35% Cotton Twill, 195gsm.

Suggested Decoration:

Screen Print, Transfer Print, Embroidery

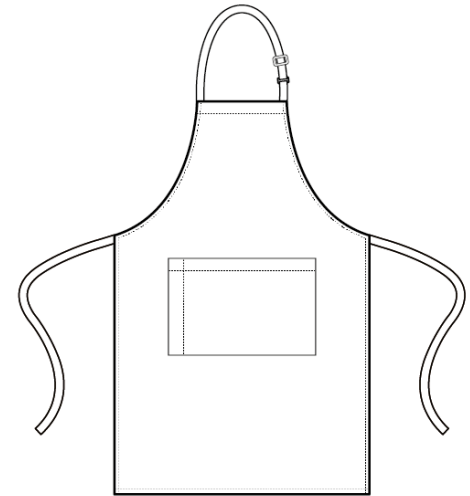
Country of Origin:

China, Bangladesh, Egypt

Commodity Code:

6211431000

Features:



Wash Care:



Garment Sizes:

86cm long, 72cm wide

Carton Information:

Sizes	Carton	Pack	SKU's	Carton Weight	Carton Dimensions
One size	72	6	42	15.1kg	60cm x 40cm 20cm